



Guide to Horse Showing with
#TeamTurnout!



Please note that this information can also be found on our website

www.turnoutstables.com

Turnout Stables attends Trillium/Silver horse shows in the Eastern Zone on the THJA circuit, as well as all Schooling/Bronze shows that accompany them on the OVPSC circuit.

Turnout Stables also attends select 'A' shows in Ontario.

Be sure to discuss this with your coach to determine which show is best suited for you and your equine partner in order to achieve your desired goals.

First Steps:

- Confirm equine partner
- Set out goals (just for fun, championships, Royal Winter Fair, etc)
- Determine number of shows you plan/require to attend
- Obtain all required memberships (see below!)

Note that in order to qualify for end of season finals, there is a minimum number of shows that you are required to attend - make sure this is confirmed at the beginning of your season



Show Attire Required:

- Show breeches (light tan/beige in colour)
- Show Jacket (black or navy preferred, coloured jackets only in jumper ring)
- Black tall boots (paddock boots & half chaps OK for bronze, Jodhpurs & boot straps for younger riders)
- Show shirt (collared)
- Approved helmet (black or navy)
- Hair net & hair accessories
- Black gloves
- Short black crop
- Boot polish
- Boot socks

***** refer to horse show checklist below for more information!*****

Where to buy?

- Greenhawk
- Vision Saddlery
- Apple Saddlery
- Encore Equestrian
- Local Facebook marketplace groups



Memberships:

Specific memberships are required by each rider before showing. Refer to the chart below:

Wondering which memberships you need to show on what circuit?

Circuit	Equine Canada (EC)	Ontario Equestrian Federation (OEF)	Trillium Hunter/Jumper Association (THJA)	Ontario Hunter/Jumper Association (OHJA)
Gold / 'A' Shows	YES	YES **		YES - only for points
Silver / Trillium	YES	YES **	YES	
Bronze / OVPS / Schooling	YES	YES **		

***NOTE:** EC Amateur Status declaration for adults is an additional \$15. Under EC rules, individuals are juniors until the end of the calendar year in which they reach the age of 18, after this they are considered adults.

****NOTE:** Competitors are now required to purchase their OEF membership prior to purchasing their EC sport licence. Please allow between 2-5 business days for processing

Horse Licence Stickers for Equine Canada passports are \$12 per horse and are available for purchase when renewing your EC sport licence

See website for further information on memberships, and where to purchase them



Turnout Show Schedule

These are the shows that Turnout Stables is scheduled to attend for the 2024 season

DATE	SHOW	LOCATION	LEVEL
MAY 11-12, 2024	THE PARKS	WESLEY CLOVER PARKS (WCP)	BRONZE/SILVER
MAY 17-29, 2024	OTTAWA WELCOME I	WCP	GOLD
MAY 23-26, 2024	OTTAWA WELCOME	WCP	GOLD
JUNE 8-9, 2023	THE PARKS	WCP	BRONZE/SILVER
JUNE 15-16, 2024	GAELIC GLEN @ WCP	WCP	BRONZE/SILVER
JUNE 26-30, 2024	CALEDON	CALEDON EQUESTRIAN PARK	GOLD
JULY 3-7, 2024	OTTAWA SUMMER TOURNAMENT I	WCP	GOLD
JULY 10-14, 2024	OTTAWA SUMMER TOURNAMENT II	WCP	GOLD
JULY 17-21, 2024	CALEDON	CALEDON EQUESTRIAN PARK	GOLD
JULY 24-28, 2024	CALEDON	CALEDON EQUESTRIAN PARK	GOLD
AUGUST 3-4, 2024	THE PARKS	WCP	BRONZE/SILVER
AUGUST 10-11, 2024	THE PARKS	WCP	BRONZE/SILVER
AUGUST 14-18, 2024	ANGELSTONE	ANGELSTONE	GOLD
AUGUST 25, 2024	GAELIC GLEN DEVELOPMENT SHOW	GAELIC GLEN STABLES	BRONZE
AUGUST 21-25, 2025	MAJOR LEAGUE SHOWJUMPING	WCP	GOLD
AUGUST 29-SEPTEMBER 1, 2024	TRILLIUM CHAMPIONSHIPS	WCP	SILVER
SEPTMEBER 12-15, 2024	OTTAWA NATIONAL	WCP	GOLD
SEPTEMBER 18-22, 2024	CALEDON	CALEDON EQUESTRIAN PARK	GOLD
SEPTEMBER 25-29, 2024	CALEDON	CALEDON EQUESTRIAN PARK	GOLD

Preparing for the Show

Aside from being consistent with lessons, there is preparation required when attending a show.

Day Before:

- Flat horse
- Bathe horse (confirm with Debbie if horse is to have a stable sheet on overnight)





- Braid horses mane (silver circuit)
- Braid mane and tail (gold circuit)
- Clean tack
- Pack show box (see horse show checklist for items to pack)
- Prep trailer

****If you do not know how to braid, inquire with Debbie about hiring someone to braid for a fee****

Morning of:

- Attend barn to prepare horse for shipping
- Feed horse
- Wrap horses legs (no bow wraps)
- Ensure trailer has all necessary equipment
- Horse to travel in trailer wearing a **leather** halter only (*Turnout has halters that can be used*)

****You should plan to arrive approximately 30-45 mins BEFORE the trailer is scheduled to depart for the show****

TRAILER NORMALLY LEAVES AROUND 6-630AM THE MORNING OF A SHOW IF LOCAL

*****Follow Trailer to show grounds - If there was ever an emergency and the horses needed to be removed the trailer, it is important to have all hands readily available to care for their respective horse. This is why we always ask that you follow trailer to and from show grounds *****

Morning arrival at show:

- Get yourself ready to ride (helmet, boots, etc)
- Take horse off trailer, unwrap legs and groom horse in preparation to tack up
- Tack up horse and prepare for warm up horse upon coaches instruction (be sure to get number from Debbie)
- Warm up horse in show ring (Debbie will advise you of where you need to be)
- Horse back on trailer or hand walked until time to show unless your division is approaching
- Ensure horse always has water and hay

- Clean/groom horse to prepare for show ring
- Be sure you are ready to tack up and get dressed upon notice to head to the ring
- Have a ringside bag ready that includes the following:
 - *Hoof polish*
 - *Towel*
 - *Brushes*
 - *Treats*
 - *Water for yourself*
 - *Spurs if needed*

Time to Show:

- Get yourself ready in show gear (don't forget your number!)
- Groom horse and tack up
- Mount horse either at trailer and walk to rings, or handwalk to rings and mount there
- Once on, flat horse in warm up ring
- Debbie will come and school you over some jumps right before it is time to head into the ring
- Go over the course and memorize it
- Final touches on horse (wipe off any dirt, polish hooves, get some water)

SHOW TIME: Go play around in the show ring, have fun and show off all of your hardwork!



After Showing:

- Once your time in the show ring has ended, be sure to untack the horse back at the trailer and offer water
- Apply poultice to horses legs, line legs with wet paper towels over poultice and then apply shipping wraps to horses legs

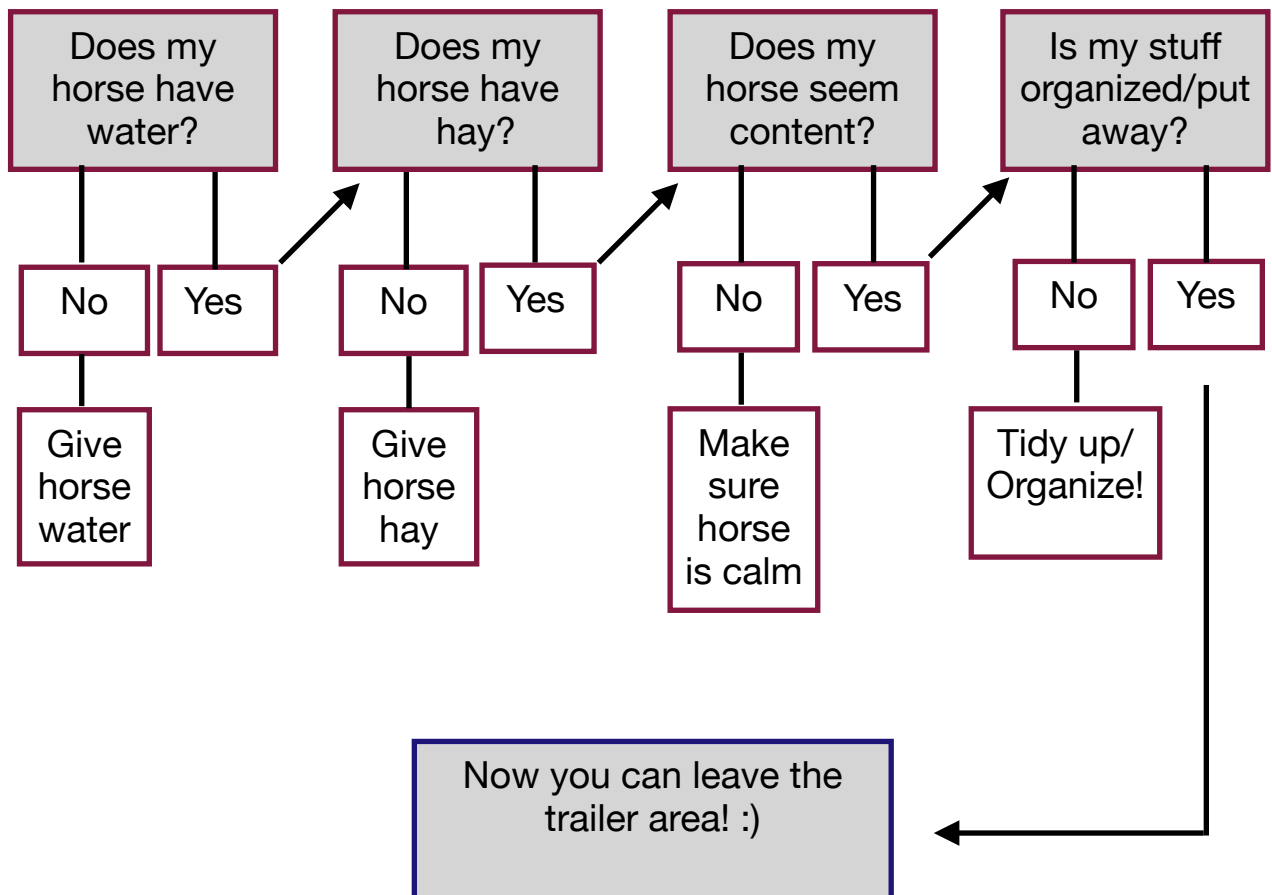
- If time permits, you can remove the braids while you wait at the show, otherwise remove once back at the barn

NOTE: you are require to stay at the show for the duration of the time that the barn is there. You are responsible for caring for the horse until the trailer departs. Be prepared that show days can be long. Bring a change of clothes, drinks, snacks, money, etc.



Can I watch my fellow teammates show?

Of course! Just make sure your horse is taken care of first before leaving the trailer!



Once departing:

- You are required to follow the trailer back to the barn. Please stay close in case there is ever an emergency and the horses need to come off of the trailer
- Keep the lead line on the trailer for easy access

Once at the barn:

- take the horse off the trailer and feed them in the barn if required, otherwise return them to their paddocks (leave wraps on legs)
- Clean trailer and replace with clean shavings
- Load hay nets
- Refill water
- Put away tack, remove all belongings from trailer

Before leaving the barn, please check in with Debbie to make sure there is nothing else needing to be completed.

The main goal is to have fun and show off the skills you have worked so hard on. In order to ensure everyone has a fun and positive show day, the collective efforts of everyone to prepare and maintain the trailer is key.



Fees

Coaching:

- Hunter or Jumper Division: \$60
- Hunter Division plus Equitation Class: \$80

Shipping:

- Local Silver, Bronze & Fun Shows: \$120
- Gold Shows: Individually priced by show

note that Debbie has the discretion to raise shipping fees should there be a rise in fuel pricing

All fees are due on the day of the show. Coaching and shipping fees are paid directly to Debbie.

Methods of payment: Cash or e-transfer to turnoutstables@hotmail.com

Show fees:

Show fees are at the discretion of the venue hosting the show. Refer to the prize list for each show to see what the fees will be for you division. Show fees are paid at the show office located on the show grounds. Note that show fees must be paid to host prior to leaving show grounds. Rider's number to be returned at the time of payment to the show office.

Cash, debit or credit is usually the accepted forms of payments at most show grounds.





Print this out to help you prepare for your horse show!

HORSESHOW CHECKLIST

RIDER

- ☐ Show jacket
- ☐ Show blouse
- ☐ Tan/Beige Breeches
- ☐ Field Boots or Black paddock boots with smooth black half chaps
- ☐ Black Gloves
- ☐ Boot socks
- ☐ Belt
- ☐ Helmet (approved)
- ☐ Hair net and hair accessories
- ☐ Short black crop
- ☐ Spurs (if needed)
- ☐ Boot polish
- ☐ Boot pulls (if needed)
- ☐ Rain gear (rain jacket, pants and rubber boots)
- ☐ Hat
- ☐ Sunscreen
- ☐ Bottled water
- ☐ Extra clothing
- ☐ Snacks, lunch or money for canteen
- ☐ Memberships

HORSE

- ☐ Leather halter
- ☐ Leather lead rope
- ☐ Shipping cottons (no bows) and wraps
- ☐ Clean tack
 - ☐ Bridle
 - ☐ Saddle
 - ☐ Girth
 - ☐ Martingale (if needed)
- ☐ Clean white fitted saddle pad (hunters) or clean white square saddle pad (jumpers)
- ☐ Horse boots/polos (if needed)
- ☐ Towels
- ☐ Sponge
- ☐ Ring caddy/bucket
- ☐ Hoof polish
- ☐ Hoof pick
- ☐ Brushes
- ☐ Braiding supplies (if needed)
- ☐ Corking supplies (if needed)
- ☐ Poultice (no blue lotion)
- ☐ Blue shop towels to wrap poultice
- ☐ Fly spray
- ☐ Show sheen
- ☐ Stain remover (green spot)/rubbing alcohol
- ☐ Stable sheet (can be borrowed from barn)
- ☐ Wool cooler/Sun sheet (weather dependent)
- ☐ Tack box/trunk